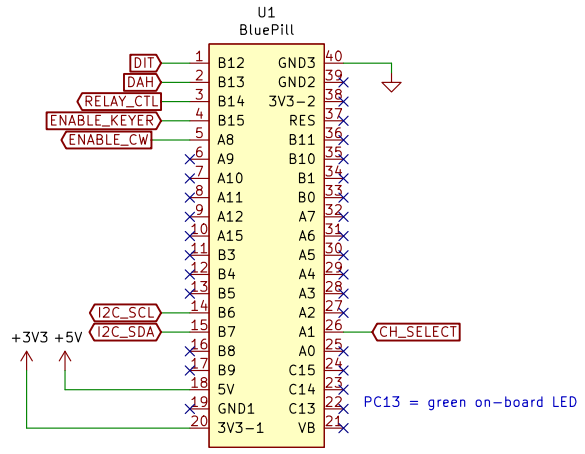
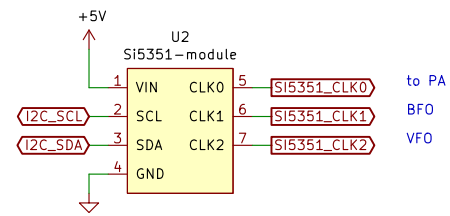
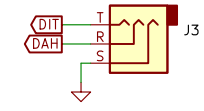


Note: the coil in HFD4/12SR is polarized!  
 Make sure pin 1 is connected to VCC  
 and pin 8 is pulled to GND. Otherwise  
 the relay will not switch.

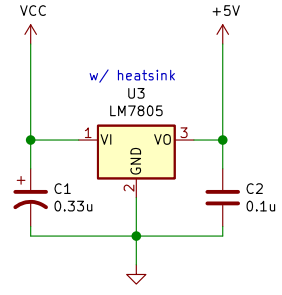
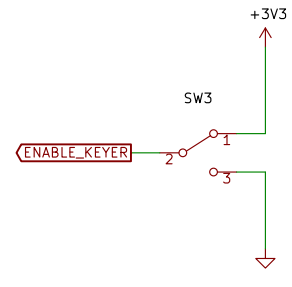
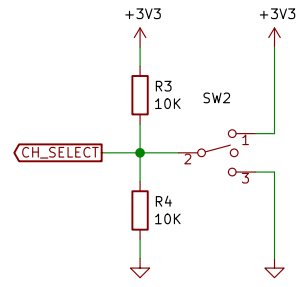
- Sheet: RX1  
File: rx1.sch
- Sheet: RX2  
File: rx2.sch
- Sheet: TX  
File: tx.sch



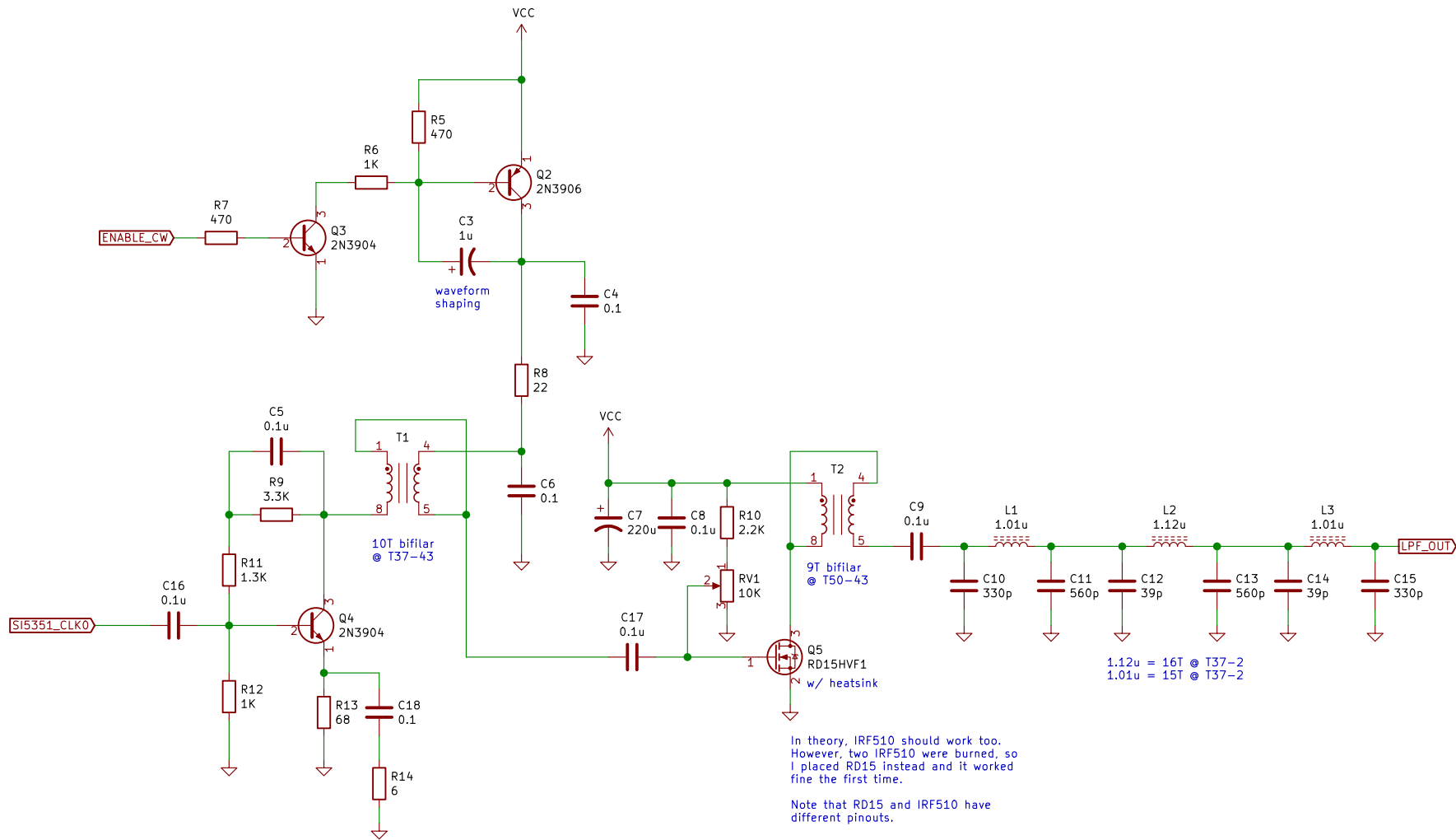
PC13 = green on-board LED



The module has built-in pull-up resistors for I2C.



Sheet: /		Date: 2022-06-11	
File: ayn-3c.sch		Rev:	
Size: A4		KiCad E.D.A. kicad (5.1.12-1-10_14)	
Title: AYN/3C by R2AUK ::: <a href="https://eax.me/ayn-3c-transceiver/">https://eax.me/ayn-3c-transceiver/</a>		Id: 1/4	



In theory, IRF510 should work too. However, two IRF510 were burned, so I placed RD15 instead and it worked fine the first time.

Note that RD15 and IRF510 have different pinouts.

1.12u = 16T @ T37-2  
1.01u = 15T @ T37-2

Sheet: /TX/  
File: tx.sch

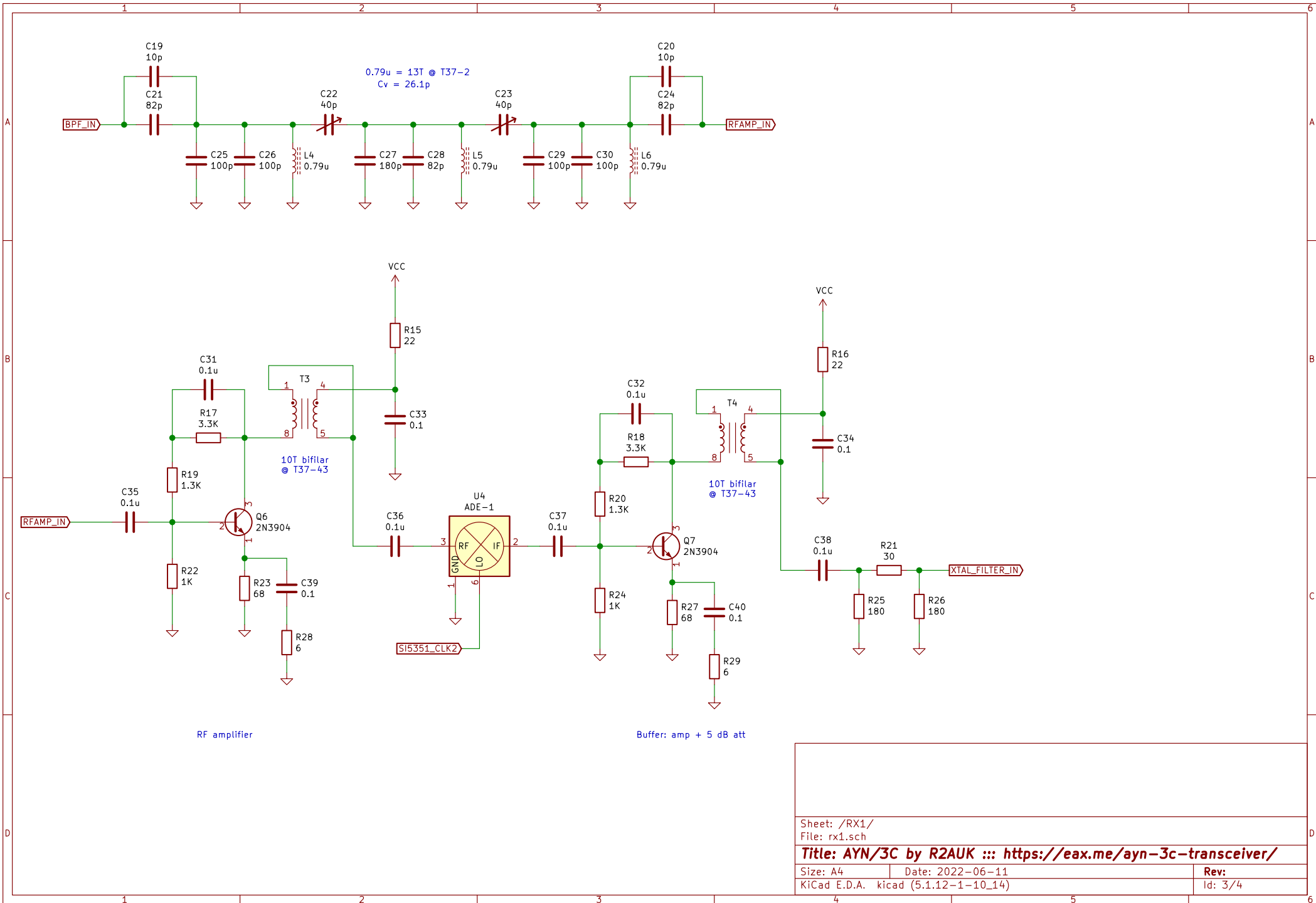
**Title: AYN/3C by R2AUK :::** <https://eax.me/ayn-3c-transceiver/>

Size: A4 Date: 2022-06-11

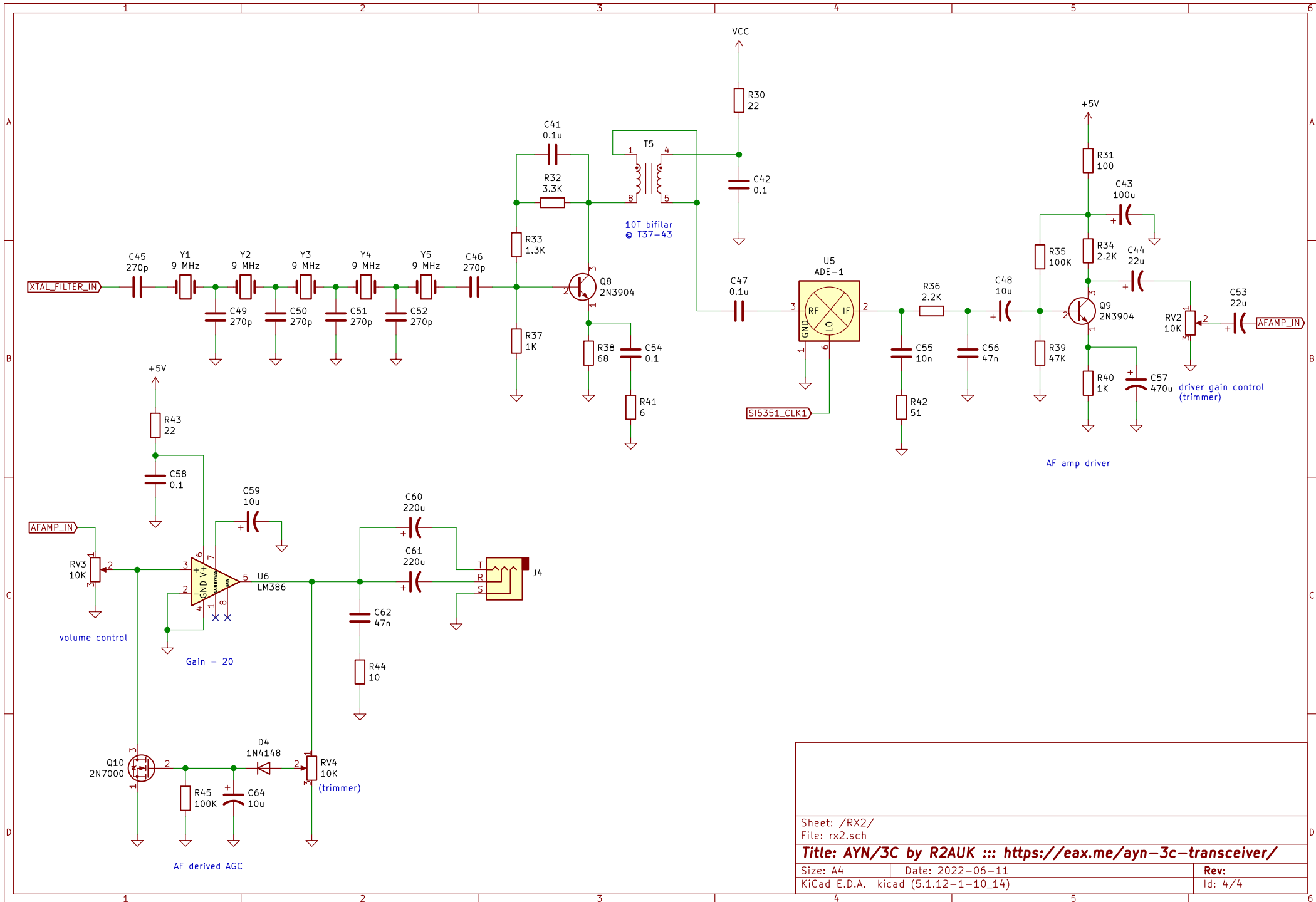
KiCad E.D.A. kicad (5.1.12-1-10\_14)

Rev:

Id: 2/4



Sheet: /RX1/		File: rx1.sch	
<b>Title: AYN/3C by R2AUK ::: <a href="https://eax.me/ayn-3c-transceiver/">https://eax.me/ayn-3c-transceiver/</a></b>			
Size: A4	Date: 2022-06-11	Rev:	
KiCad E.D.A. kicad (5.1.12-1-10_14)	Id: 3/4		



Sheet: /RX2/		File: rx2.sch	
<b>Title: AYN/3C by R2AUK ::: <a href="https://eax.me/ayn-3c-transceiver/">https://eax.me/ayn-3c-transceiver/</a></b>			
Size: A4	Date: 2022-06-11	Rev:	
KiCad E.D.A. kicad (5.1.12-1-10_14)	Id: 4/4		